

State of Wyoming Corner Record

(In compliance with the *CORNER PERPETUATION AND FILING ACT*, Wyoming Statutes, 1997 Section 33-29-140 et. seq., and the Rules and Regulations of the Board of Professional Engineers and Professional Land Surveyors)

Reverse side of this form may be used if more space is needed.

Record of original survey and citation of source of historical information (if corner is lost or obliterated). Description of corner monumentation evidence found and/or monument and accessories established to perpetuate the location of this corner. Sketch of relative location of monument, accessories, and reference points with course and distance to adjacent corner(s) (if determined in this survey). Method and rationale for reestablishment of lost or obliterated corner.

SW CORNER, SECTION 13, T.16N., R.67W., 6TH P.M., LARAMIE COUNTY, WYOMING

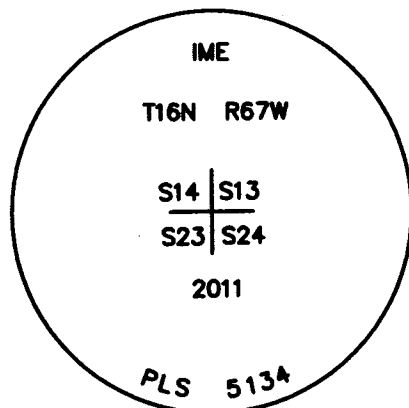
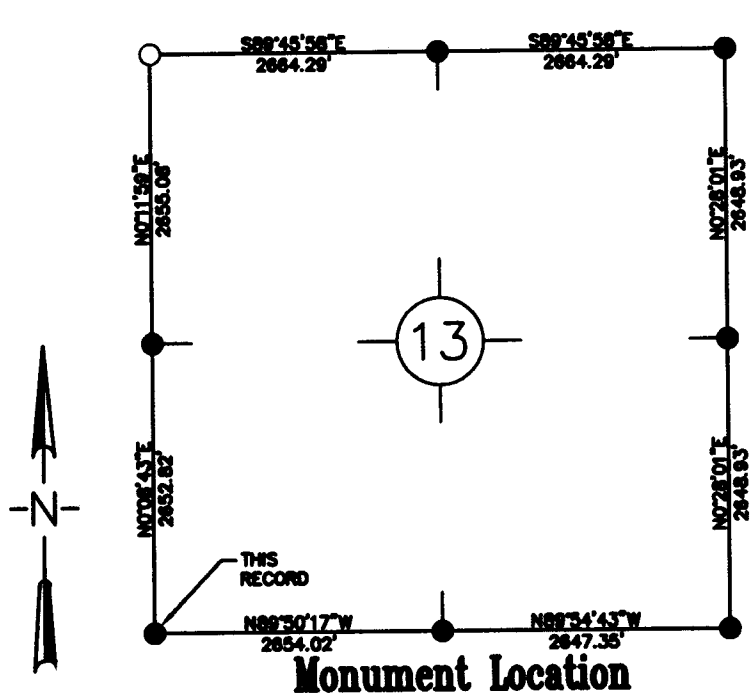
LEGEND

FOUND: SPIKE AT CENTER OF 3/4" IRON PIPE IN CONCRETE 23" BELOW SURFACE IN GRAVEL ROAD 48.7' NW OF RR TIE FENCE CORNER.

SET: 2 1/2" ALUMINUM CAP AT PIPE LOCATION.

- FOUND BRASS CAP
- FOUND ALUMINUM CAP
- ◇ FOUND STONE
- SET 2 1/2" ALUMINUM CAP ON 5/8" X 24" REBAR STAMPED IME PLS 5134.

Note: Bearings and distances are relative to NAD 1983 Wyoming State Plane East Zone. Distances shown are ground.



Monument Inscription

Date of Field Work: 2/5/2011 Office Reference: Book: 1104 Page: 70 15265-RS (Pl. #4286)

Cross Index Plat

	1	2	3	4	5	6	7	8	9	10	11	12	13	14	15	16	17	18	19	20	21	22	23	24	25	26
A																										
B																										
C		6	5	4	3	2	1																			
D																										
E																										
F																										
G																										
H																										
I																										
J																										
K																										
L		18	17	16	15	14	13																			
M																										
N																										
O																										
P		19	20	21	22	23	24																			
Q																										
R																										
S																										
T		30	29	28	27	26	25																			
U																										
V																										
W																										
X		31	32	33	34	35	36																			
Y																										
Z																										

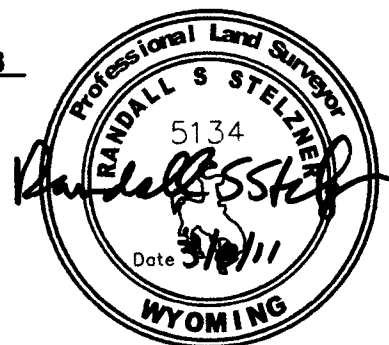
Firm/Agency, Address

Inberg-Miller Engineers
124 East Main Street
Riverton, WY 82501

Telephone Number: 307-856-8136

This corner record was prepared by me or under my direction and supervision.

SEAL & SIGNATURE



RECORDED 3/10/2011 AT 12:27 PM REC# 564570 JK# 2211 PG# 478
 DEBRA K. LATHROP, CLERK OF LARAMIE COUNTY, WY PAGE 1 OF 1

Corner Name SW Corner Section 13, T 16 N, R 67 W, 6th P.M. Cross-Index No.: N-21
 County: Laramie, Wyoming